



An agency of the Government of Ontario



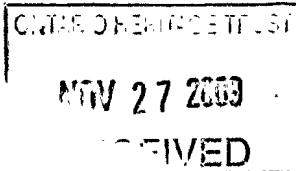
Un organisme du gouvernement de l'Ontario

This document was retrieved from the Ontario Heritage Act e-Register, which is accessible through the website of the Ontario Heritage Trust at **www.heritagetrust.on.ca**.

Ce document est tiré du registre électronique, tenu aux fins de la *Loi sur le patrimoine de l'Ontario*, accessible à partir du site Web de la Fiducie du patrimoine ontarien sur **www.heritagetrust.on.ca**.



City Clerk's Office



Secretariat
Rosalind Dyers
Toronto and East York Community Council
City Hall, 2nd Floor, West
100 Queen Street West
Toronto, Ontario M5H 2N2

Ulli S. Watkiss
City Clerk

Tel: 416-392-7033
Fax: 416-397-0111
e-mail: teycc@toronto.ca
Web: www.toronto.ca



**IN THE MATTER OF THE ONTARIO HERITAGE ACT
R.S.O. 1990 CHAPTER 0.18 AND
135 FIRST AVENUE (ST. MATTHEW'S ANGLICAN CHURCH AND CHURCH HALL)
CITY OF TORONTO, PROVINCE OF ONTARIO**

NOTICE OF PASSING OF BY-LAW

St. Matthew's Anglican Church
St. Matthews Rector & Church Wardens
93 First Avenue
Toronto, ON M4M 1W9

Ontario Heritage Trust
10 Adelaide Street East
Toronto, Ontario
M5C 1J3

Take notice that the Council of the City of Toronto has passed By-law No. 1074-2009 to designate 135 First Avenue (St. Matthew's Anglican Church and Church Hall) (Toronto-Danforth, Ward 30) as being of cultural heritage value or interest.

Dated at Toronto this 25th day of November, 2009.

Ulli S. Watkiss
City Clerk

Authority: Toronto and East York Community Council Report 4, Clause 14,
as adopted by City of Toronto Council on May 23, 24 and 25, 2006
Enacted by Council: October 27, 2009

CITY OF TORONTO

BY-LAW No. 1074-2009

To designate the property at 135 First Avenue (St. Matthew's Anglican Church and Church Hall) as being of cultural heritage value or interest.

WHEREAS authority was granted by Council to designate the property at 135 First Avenue (St. Matthew's Anglican Church and Church Hall) as being of cultural heritage value or interest; and

WHEREAS the *Ontario Heritage Act* authorizes the Council of a municipality to enact by-laws to designate real property, including all the buildings and structures thereon, to be of cultural heritage value or interest; and

WHEREAS the Council of the City of Toronto caused to be served upon the owners of the land and premises known as 135 First Avenue and upon the Ontario Heritage Trust, Notice of Intention to designate the property and has caused the Notice of Intention to be published in a newspaper having a general circulation in the municipality as required by the *Ontario Heritage Act*; and

WHEREAS the reasons for designation are set out in Schedule "A" to this by-law; and

WHEREAS a notice of objection dated June 28, 2006 was served upon the Clerk of the municipality; and

WHEREAS the objector has served a notice of withdrawal upon the Clerk and on the Conservation Review Board;

The Council of the City of Toronto HEREBY ENACTS as follows:

1. The property at 135 First Avenue more particularly described in Schedule "B" and shown on Schedule "C" attached to this by-law, is designated as being of cultural heritage value or interest.
2. The City Solicitor is authorized to cause a copy of this by-law to be registered against the property described in Schedule "B" to this by-law in the proper Land Registry Office.

3. The City Clerk is authorized to cause a copy of this by-law to be served upon the owners of the property at 135 First Avenue and upon the Ontario Heritage Trust and to cause notice of this by-law to be posted on the City's web site for a period of 30 days in accordance with Municipal Code Chapter 162, Notice, Public, Article II, § 162-4, Notice requirements under the *Ontario Heritage Act*.

ENACTED AND PASSED this 27th day of October, A.D. 2009.

SANDRA BUSSIN,
Speaker

ULLI S. WATKISS
City Clerk

(Corporate Seal)

SCHEDULE "A"**REASONS FOR DESIGNATION****St. Matthew's Anglican Church and Church Hall: 135 First Avenue, Toronto**Description

The property at 135 First Avenue is worthy of designation under Part IV of the *Ontario Heritage Act* for its cultural heritage value or interest, and meets the criteria for designation prescribed by the Province of Ontario under the three categories of design or physical value, historical value and contextual value. Located on the south side of First Avenue, west of Logan Avenue in the Riverdale neighbourhood, St. Matthew's Anglican Church was completed in 1889. The complementary Church Hall (1907) is included in the Reasons for Designation. The property was listed on the City of Toronto Inventory of Heritage Properties in 1986.

Statement of Cultural Heritage Value

The cultural heritage value of St. Matthew's Anglican Church is related to its design or physical significance as a well-designed example of Gothic Revival architecture, distinguished by its dominant tower, fenestration with stained glass, and medieval-inspired plan and design elements. The church is complemented in scale, materials and detailing by St. Matthew's Church Hall, located south of and parallel to the Church, with a link connecting the two buildings.

The cultural heritage value of St. Matthew's Anglican Church also relates to its historical association as representative of the practice of Toronto architects Strickland and Symons. In partnership between 1887 and 1898, the firm's commissions included the Consumers' Gas Company's complex (completed in 1888) at 26 Berkeley Street and St. Simon's Anglican Church (1888) at 40 Howard Street. The latter properties are recognized on the City of Toronto Inventory of Heritage Properties and designated under Part IV of the *Ontario Heritage Act*.

The cultural heritage value of St. Matthew's Anglican Church and Church Hall is also connected to its visual presence as an important institutional complex in the Riverdale neighbourhood.

Heritage Attributes

The heritage attributes of St. Matthew's Anglican Church related to its cultural heritage value as a good example of Gothic Revival styling are found on the exterior walls, roof and interior, consisting of:

- The longitudinal plan with a nave, single (north) side aisle, transepts and chancel (east) under a steeply-pitched gable roof with a cross symbol at the west end.
- The application of materials, with red brick and stone cladding with stone, brick and wood detailing.

- At the east end: the tower with a square base, a hexagonal steeple with pinnacles and a chimney, and a combination of flat-headed and pointed-arch window openings, some with louvers.
- On the principal (west) façade: the gable end wall, with buttresses and pinnacles, a round window opening above a crenellated cornice with corbelling, and three pointed-arch window openings.
- On the east wall: the corbelled brickwork and single monumental pointed-arch window opening.
- On the north elevation: the principal entrance at the west end with a gabled frontispiece, where a pair of doors is set in a multiple arched surround and flanked by buttresses; the chapel entry at the east end; the projecting transept with a gabled frontispiece flanked by buttresses; the side aisle beneath a shed roof, with small pairs of arched windows joined by a stone band course and surmounted by corbelled brickwork; and, above the side aisle, the clerestory with piers organizing large arched window openings containing arched and round windows.
- On the south wall: the corbelled brickwork along the roofline; the buttresses organizing large arched window openings; and, at the south end, the open porch with a gable roof and wood detailing (the base of the porch has been altered).
- On all walls, the placement and detailing of the arched and flat-headed door and window openings.
- The collection of stained glass windows, most of which were designed by the important Toronto artisans, Robert McCausland Limited and include the window in the south transept from the former St. Matthew's Anglican Church (1875) on DeGrassi Street, and the Memorial East Window commemorating parishioners who died in World War I.
- On the interior: the red brick, stone and stucco finishes; the open timber roof structure with trusses; the roof trusses above the side aisle (north); the granite-clad columns supporting the brick arches that separate the nave from the side aisle; the window detailing with quoined surrounds; the pointed-arch opening to the chancel (east) with its vaulted ceiling; the chapel (northeast) with its vaulted ceiling and wood trim; the wood screens, one marking the entrance to the chancel, and the other installed near the west end of the sanctuary as a World War II memorial; near the north transept, the organ with a Casavant console and pipes; and, the metal light fixtures.
- The contextual features, with the setback of the church from First Avenue and, in the open space separating the Church from the Church Hall, a headstone from the churchyard of the first church on DeGrassi Street.

The heritage attributes of St. Matthew's Church Hall related to its value as an auxiliary building complementing the adjoining Church are found on the exterior walls, roof and interior consisting of:

- The red brick cladding with brick and stone trim, including a stone datestone marked "1907".
- The gable roof with stone coping and a brick chimney.
- The design and placement of the door and window openings, combining flat-headed, segmental-arched and pointed-arch openings with brick flat arches and stone sills.
- On the interior, the wood ceiling trusses in the parish hall.

SCHEDULE "B"

Part of PIN 21070-0071 (LT)

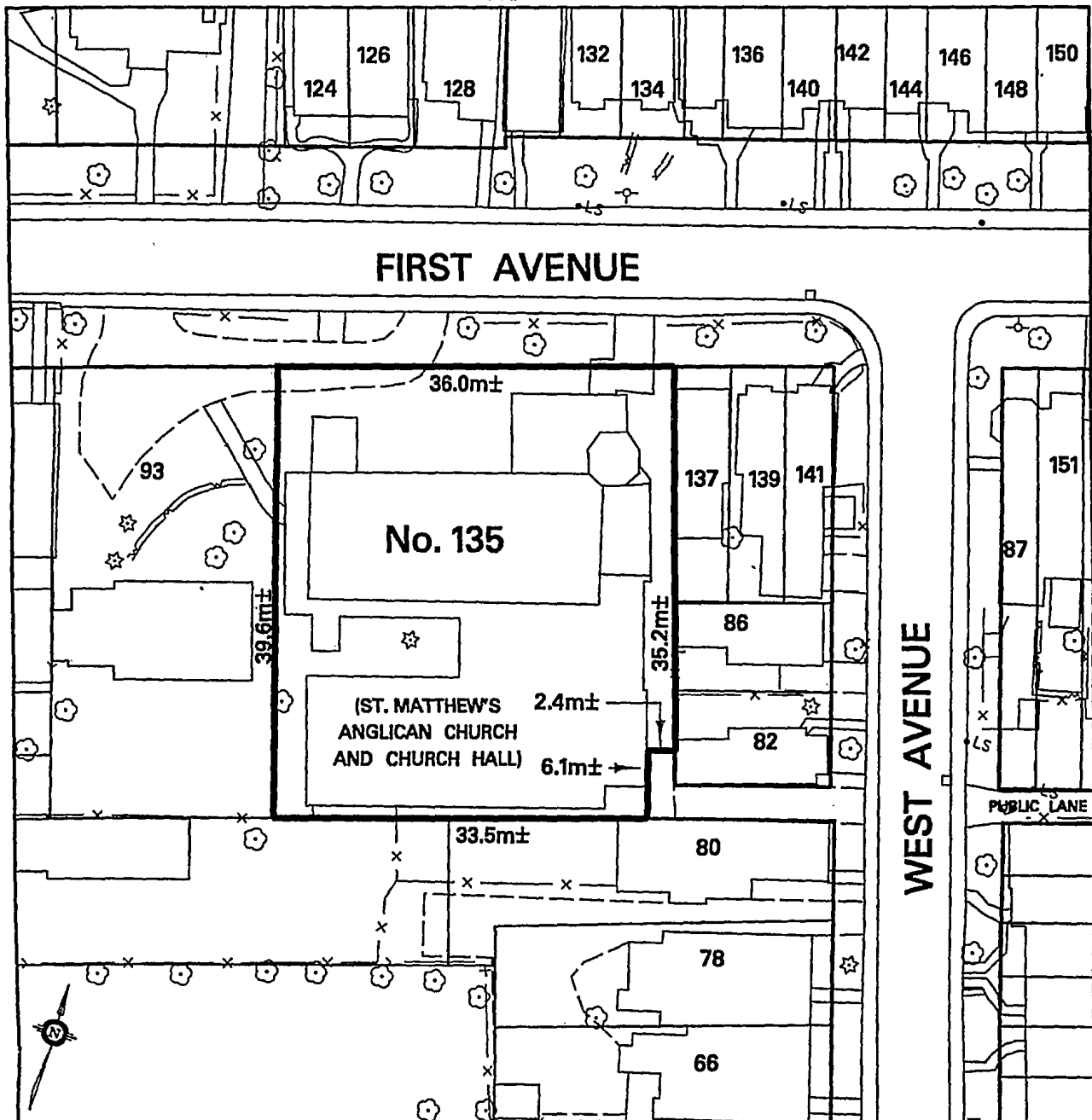
LOT 22 PL 628 CITY EAST; PT LT 12 PL 508 TORONTO AS IN OR295

City of Toronto and Province of Ontario

Land Titles Division of the Toronto Registry Office (No. 66)

The hereinbefore described land being delineated by heavy outline on Sketch No. PS-2009-096 dated October 2, 2009, as set out in Schedule "C".

SCHEDULE "C"



Toronto

TECHNICAL SERVICES DIVISION
SURVEY & MAPPING SERVICES

NOTE:
THIS SKETCH IS NOT
A PLAN OF SURVEY
AND HAS BEEN COMPILED
FROM SURVEY NOTES AND
OFFICE RECORDS. IT SHALL
NOT BE USED EXCEPT FOR
THE PURPOSE INDICATED
IN THE TITLE BLOCK

CHECKED BY: JOHN HOUSE
PREPARED BY: DWAYNE PITT

WARD 30 - TORONTO-DANFORTH
DATE: OCTOBER 02, 2008

PROPERTY INFORMATION SHEET

NO. 135 FIRST AVENUE (ST. MATTHEW'S ANGLICAN
CHURCH AND CHURCH HALL).

LAND DESIGNATED AS BEING OF
CULTURAL HERITAGE VALUE AND INTEREST

(NOT TO SCALE)

SKETCH No. PS-2009-096