



An agency of the Government of Ontario



Un organisme du gouvernement de l'Ontario

This document was retrieved from the Ontario Heritage Act Register, which is accessible through the website of the Ontario Heritage Trust at **www.heritagetrust.on.ca**.

Ce document est tiré du registre aux fins de la *Loi sur le patrimoine de l'Ontario*, accessible à partir du site Web de la Fiducie du patrimoine ontarien sur **www.heritagetrust.on.ca**.

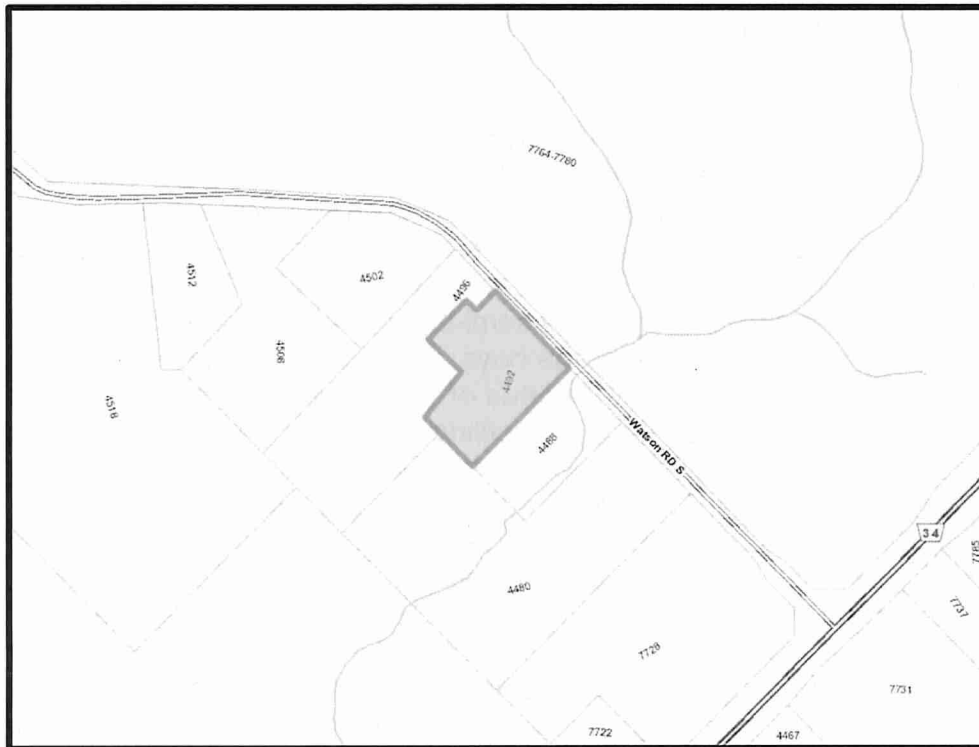


THE TOWNSHIP OF PUSLINCH NOTICE OF INTENTION TO DESIGNATE 4492 Watson Road South, Puslinch

TAKE NOTICE that the Council of the Corporation of the Township of Puslinch intends to designate 4492 Watson Road South, as a property of cultural heritage value or interest under section 29, Part IV of the Ontario Heritage Act, R.S.O. 1990, Chapter 0.18. as authorized by Township of Puslinch Council through Resolution No. 2024-336.

Description of the Property

The subject property is described as being PT Lot 20, Concession 10, Township of Puslinch as MS37014 & MS37795; description may not be acceptable in future as in MS37014 & MS37795, municipally known as 4492 Watson Road South.



(Key Map Showing Location of 4492 Watson Road South)

Short Statement of Cultural Heritage Value or Interest

The property located at 4492 Watson Road South, Puslinch, contains the Corwhin schoolhouse of the former "School Section 10" which holds significant cultural heritage value due to its role in the architectural, educational and social history of the Corwhin community and Puslinch Township. This value is retained in the one-room stone schoolhouse on the property. The building represents the efforts of the constituents of School Section 10 to provide public elementary education to the local community.

NOV 21 2024

Ontario Heritage Trust

The subject building is one of ten extant schoolhouses from the original twelve school sections of Puslinch Township. The first schoolhouse in Corwhin is thought to have been a very small stone structure on the corner of the 11th concession and county road 34.

The stone schoolhouse at 4492 Watson Road South was constructed in 1885 using building plans published by the Ontario Department of Education in the mid-nineteenth century as a guide. The board of School Section 10 fulfilled these plans according to their own resources and preferences. The property's design value is seen in the distinct stone masonry attributed to local masons, William Laing and Thomas Taylor. Whereas other local landmarks have disappeared, this schoolhouse maintains its strategic location as a landmark in the middle of Corwhin's school section.

The property is listed on the Township of Puslinch Municipal Heritage Register and has received a plaque from the Township's Heritage Committee for its cultural heritage value. The property meets the requirements for designation prescribed by the Province of Ontario as it satisfies at four of the nine criteria for determining cultural heritage value or interest under Ontario Regulation 9/06 (as amended by O. Reg. 569/22) under the Ontario Heritage Act. The Corwhin schoolhouse has design/physical value, historical/associative value, and contextual value.

Design Value:

The Corwhin school has design and physical value. The building design is a good representative example of later nineteenth century Ontario schoolhouse design and construction method using in local stone and masonry techniques. The single-storey, rectangular form with a front gable roof over a three-bay façade was made popular by a design published in The Canada Farmer newspaper in 1866. The Corwhin school façade has a large centre window opening with a semi-circular arch flanked by two front entrance doors - one for the girls, the other for the boys. The exterior walls were constructed with split-faced limestone and granite fieldstones of varying shapes and sizes. The exterior has been finished with tape-pointing – a rectilinear pattern of white lime applied over the mortar joints to create the appearance of what is largely horizontal coursed ashlar or (square dressed) stonework. This technique was widely employed by stone masons in Puslinch and Wellington County in the later 19th century and is seen in all historic photos of the Corwhin school. The large window opening in the façade has two semi-circular arches meeting at a keystone all in smooth-faced limestone dressed with a margin on the outside arris or edge. The heads the front doors and the side windows were constructed in a low camber segmental arch with dressed limestone in a type of Welsh arch with large haunch stones flanking three tapered and dressed voussoirs. The sides of the door and window openings as well as the front corners of the building were constructed with roughly squared quoin blocks of limestone that are flush with the wall face. The semi-circular, carved stone tablet presents the building name and date of construction "S. S. No.10, Puslinch – Er'd 1885".

Historical or Associative Value:

The Corwhin schoolhouse has historical value as it is directly associated with the theme of the development of primary education in Puslinch Township. As Puslinch was settled, it was divided into twelve school sections. The residents of each section built their own school, which not only represented and defined the geographic community but also

became a center for community activities. Shortly after School Section 10 was established in 1857 a proper site for a school was determined and Lot 20, Front Concession 10 was purchased from John Laing. In 1878 a decision was taken to retain, enlarge and repair the previous schoolhouse. One additional acre of land was purchased for \$100 from John Laing for a playground and the school grounds were fenced by Duncan McFarlane for \$129.00. In 1884 it was felt that a new school was needed as the old school was needing many repairs. The present structure was built in the summer of 1885 on the same lot as the previous school.

In addition to providing elementary education for families in the "Section" the Corwhin School hosted local social events including dances, bingo, debates and Sunday school services. The property served the Corwhin community as its educational and community centre for 75 years until its closure in 1961, when local schools were centralized to a consolidated school in the Township. In 1963, the property was acquired by the Girl Guides of Canada, who named it Camp Corwhin. It has since been rehabilitated as a residence.

Contextual Value:

The immediate contextual value of the Corwhin schoolhouse is its prominence as a landmark that helps to define the character of the area on the south slope of the Watson Road hill north of Wellington Road 34. The broader contextual value of the Corwhin schoolhouse property is based on its strategic location at the geographic centre of School Section 10 in the Corwhin community. Although it was a distance from the hamlet of Corwhin, the school's central location was a focal point for farming families and young scholars in lots 14- of the 9th to 11th Concessions of Puslinch from 1857 until 1961.

Description of Heritage Attributes

The following are to be considered as heritage attributes to be protected by a heritage designation by-law for 4492 Watson Road South.

Corwhin Schoolhouse:

- Height, scale, and form of original 1885 schoolhouse building
- Front gable roof line with three bay façade
- Large, semi-circular window opening in the facade with dressed limestone arch and keystone
- Dressed limestone window and door heads, openings and lug sills
- Tape-pointed stone exterior walls
- Semi-circular, carved stone tablet above the front window presenting the building name and date of construction

Notice of Objection

Any person may send a notice of objection to this proposed designation, before 4:00 p.m. on November 16, 2024. This notice must be sent by registered mail or delivered to the Clerk of the Township of Puslinch, and must set out the reason for the objection and all relevant facts. If a notice of objection is received, the Council of the Township of Puslinch shall consider the objection and make a decision whether or not to withdraw the notice of

Received

OCT 21 2024

Ontario Heritage Trust

intention to designate the property within 90 days after the end of the 30-day objection period. If Council decides not to withdraw its intention to designate, a heritage designation bylaw must be passed within 120 days after the date of publication of the notice of intention to designate. Council must publish a notice of passing of the designation bylaw which is followed by a 30-day appeal period when appeals of the bylaw may be given to the Ontario Land Tribunal for a hearing and decision.

Dated October 17, 2024

Justine Brotherston,
Interim Municipal Clerk
Township of Puslinch
7404 Wellington Road 34, Puslinch, ON N0B 2J0

CC: Property Owner
Ontario Heritage Trust