



An agency of the Government of Ontario



Un organisme du gouvernement de l'Ontario

This document was retrieved from the Ontario Heritage Act e-Register, which is accessible through the website of the Ontario Heritage Trust at **www.heritagetrust.on.ca**.

Ce document est tiré du registre électronique, tenu aux fins de la *Loi sur le patrimoine de l'Ontario*, accessible à partir du site Web de la Fiducie du patrimoine ontarien sur **www.heritagetrust.on.ca**.

BY-LAW NO. 17 FOR 1990
FOR THE CORPORATION OF
THE TOWN OF CLINTON

BEING A BY-LAW to Designate certain properties as being of Architectural and/or Historical value or interest.

WHEREAS Part IV of The Ontario Heritage Act, R.S.O. 1980, Chapter 337, Section 29, authorizes the Council of a Municipality to enact by-laws to designate a portion of real property, including all buildings and structures thereon, to be of architectural or historical value or interest; and

WHEREAS the Council of the Corporation of the Town of Clinton has caused to be served on the owner of the following lands and premises -

- (a) Central Huron Secondary School
165 Princess Street East, Clinton

and upon the Ontario Heritage Foundation, notice of intention to designate the aforesaid real properties and has caused such notice of intention to be published in the same newspaper having general circulation in the Municipality once for each of three consecutive weeks; and

WHEREAS no notice of objection to the proposed designation has been served on the Clerk of the Municipality;

THEREFORE the Council of the Corporation of the Town of Clinton ENACTS AS FOLLOWS:

- (1) The original 1926 portion of Central Huron Secondary School located at 165 Princess Street East, Clinton, Ontario and more particularly described in Schedules "A" and "B" attached hereto, is hereby designated as a property of architectural interest pursuant to the Ontario Heritage Act.
- (2) The Clerk is hereby authorized to cause a copy of this by-law to be registered against the properties described in Schedule "A" hereto in the proper land registry office.
- (3) The Clerk is hereby authorized to cause a copy of this by-law to be served on the owners of the aforesaid properties and on the Ontario Heritage Foundation and to cause notice of the passing of this by-law to be published in the same newspaper having general circulation in the municipality once for each of three consecutive weeks.

READ a First and Second time this 7th day of August, 1990.

READ a Third time and finally passed this 7th day of August, 1990.


MAYOR


CLERK

SCHEDULE "A"
 To By-law No. 17 for 1990
 For the Corporation of the Town of Clinton

The lands and buildings designated herein as being of architectural value or interest under Part IV of the Ontario Heritage Act are as follows:

(a) LOCATION:

165 Princess Street East, Clinton, Ontario and being the 1926 portion of Central Huron Secondary School located thereon.

(b) LEGAL DESCRIPTION:

Lots 50 to 56 inclusive, Part of Bond Street, Plan 346, in the Town of Clinton, in the County of Huron.

(c) BUILDING AREA DESCRIPTION:

The north to south (main) building is 3 floors with level one being 1/3 below grade; the projection on the east side rises to the second floor. The dimensions are:

West Facade - North to South 98' 0"
 South Facade - East to West 60' 0"
 East Facade - to the North & South of the Projection 30' each
 South & North Facade (of Projection) - 48' each
 East Facade of Projection - 38'

(d) BASIS OR REASON FOR DESIGNATION:

This imposing structure was built in 1926 based on the architectural design of S.B. Coon and Son and was constructed by area contractors. This specific design appears to be unique in Huron County and this structure is the only surviving Secondary School Building in its original form. The tall, stately and imposing structure reflects the formality and tradition of Secondary School education in the 1920's.

The materials consist of multi-shaded red brick for the basic structure, pre-formed limestone panels for contrasting accents and copper as a decorative capping to the main entrance area.

The West Facade presents a main entrance framed by projecting bays and flanked by a series of five buttresses on each side. The main entry consists of a flight of stairs to a second floor door system. The door is topped by a semi-circular fanlight and outlined by limestone panels in a keystone pattern encompassing the round date stone. The third floor area is a window composed of 2, side by side, 3 over 3 lights topping 2, side by side, 3 over 9 lights, separated by pronounced mullions. A pointed arch caps the window system. A recessed niche holds a "Lamp of Learning" statue above the arch. The framing bays are uninterrupted from ground level to the top of the central window system where a decorative ledge begins and runs across the facade. A decorative brick pattern tops the bays and the pointed arch roof-line is copper clad. A parapet extends from bay to bay across the central entry system.

Schedule "A" to By-law No. 17 for 1990

d) Basis or Reason for Designation Cont'd

The series of 5 buttresses extend from ground level to the decorative ledge and are surmounted by limestone accents in an arrowhead design. The buttresses are separated by 4 over 6 light windows on the second and third floors and 4 over 4 light windows at ground level. The windows are separated at each level by a repetition of the bay-topping brick pattern.

The South facade has an entrance with an arrowhead capped buttress on each side. The bay-topping brick pattern is repeated above the rectangular door fan-light. A 7 over 9 window then extends to the decorative ledge and from buttress to buttress. The remainder of the facade is interrupted only by shield design limestone inserts and 3, 4 over 4 windows in the lower left (facing) corner.

The East facade is interrupted by a 48" x 38" projection rising to the 2nd level. The 3rd floor has 12 windows, 3 over 6; the 2nd floor has 4, 4 over 6 to the north and south of the projection. The ground level has 1, 4 over 2 on the south area while the north area is obstructed by new construction. The East facade was, at one time, the rear of the building and has strictly utilitarian, rectangular windows.

The projection known as the library has circular-arched windows on the second level with rectangular windows situated on the ground floor.

The South (and north) facing wall of the projection are a departure from the rectangular style exhibited on the rest of the building. There are 3 circular-arched windows with a brick pattern outlining each window. The ground level windows revert to the 4 over 5 rectangular style. The east wall has a second level arched window framed and bricked in, while the ground level has had rectangular windows at one time.

DATED at Clinton, Ontario, this 7th day of August, 1990.


MAYOR

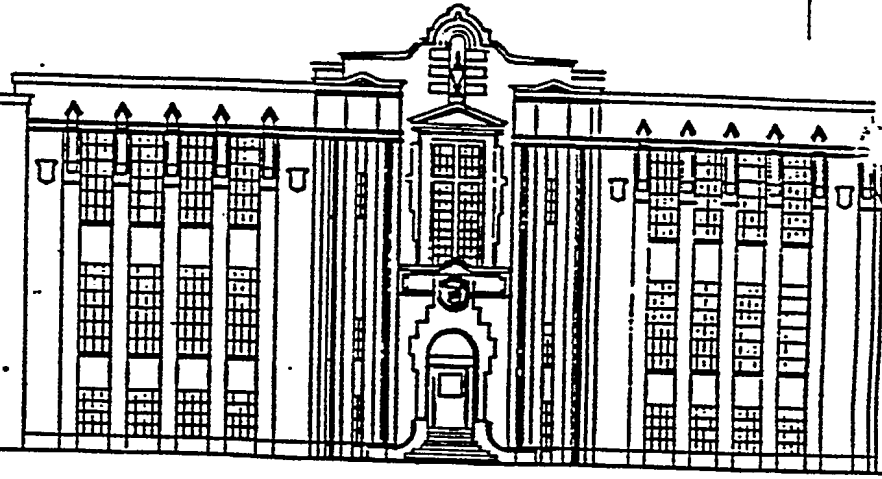
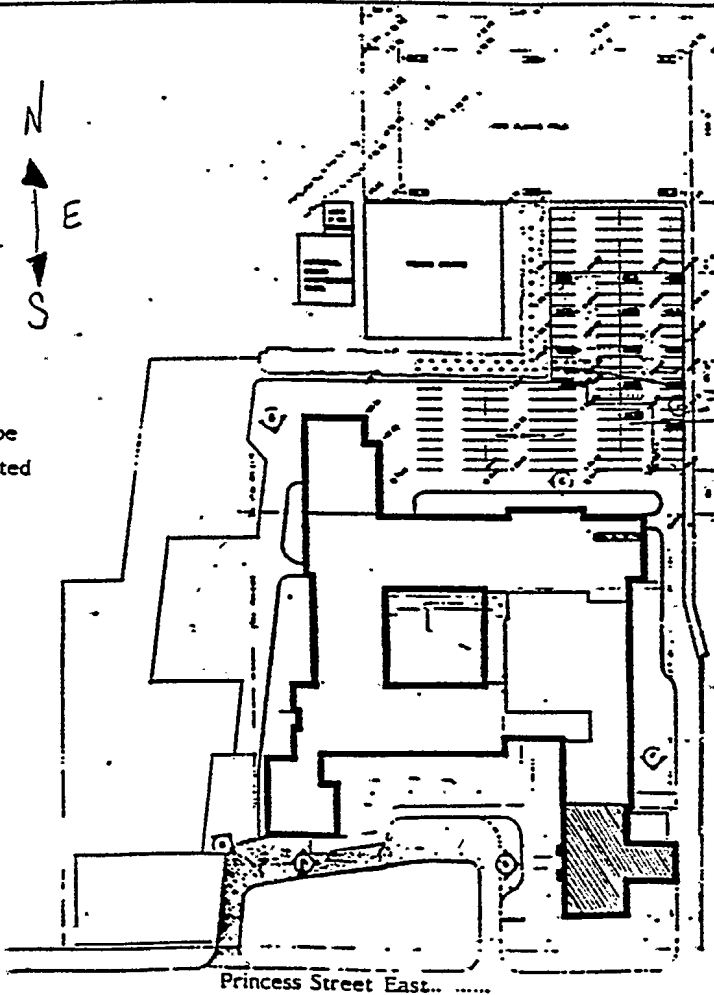

CLERK

SCHEDULE "B" to By-law No. 17 for 1990
CORPORATION OF THE TOWN OF CLINTON
DATED at Clinton, Ontario, this *7th* day of *Aug.*, 1990.

[Signature] Mayor
[Signature] Deputy Clerk



area to be designated



FRONT ELEVATION
(facing west)

CENTRAL HURON SECONDARY SCHOOL circa 1926
165 Princess Street East

RECEIVED
IN THE OFFICE

AUG 17 1990

ARCHITECTURE AND
PLANNING
HERITAGE BRANCH

IN THE MATTER OF THE ONTARIO HERITAGE ACT, 1980 R.S.O CHAPTER 337
AND IN THE MATTER OF THE LANDS AND PREMISES AT THE FOLLOWING
MUNICIPAL ADDRESS IN THE TOWN OF CLINTON, IN THE PROVINCE OF
ONTARIO

NOTICE OF PASSING OF BY-LAW

TAKE NOTICE that the Council of the Corporation of the Town of Clinton has passed By-law Number 17 for 1990 to designate the following properties as being of architectural value or interest under Part IV of The Ontario Heritage Act, 1980, R.S.O. Chapter 337.

(a) Address of Property and Reason for proposed designation:

-165 Princess Street, East, Clinton, Ontario and being the 1926 portion of Central Huron Secondary School located thereon.

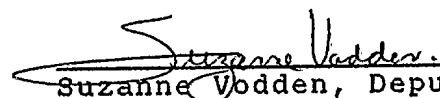
-The 1926 portion of Central Huron Secondary School is unique in the County of Huron and the only surviving Secondary School Building in its original form.

The West facade presents a main entrance framed by projecting bays and flanked by a series of five buttresses on each side.

The South facade has an entrance with an arrowhead capped buttress on each side.

The East facade was, at one time, the rear of the building and has strictly utilitarian rectangular windows. The projection know as the Library has circular-arched windows on the second level with rectangular windows situated on the ground floor.

DATED at The Town of Clinton this 14th day of August, 1990.


Suzanne Vodden, Deputy-Clerk

✓ 19
Dec. 17/01

✓