



An agency of the Government of Ontario



Un organisme du gouvernement de l'Ontario

This document was retrieved from the Ontario Heritage Act e-Register, which is accessible through the website of the Ontario Heritage Trust at **www.heritagetrust.on.ca**.

Ce document est tiré du registre électronique, tenu aux fins de la *Loi sur le patrimoine de l'Ontario*, accessible à partir du site Web de la Fiducie du patrimoine ontarien sur **www.heritagetrust.on.ca**.

M. Toronto

RECEIVED
MAY 31 2000
HERITAGE & LIBRARIES BRANCH

RECEIVED
MAY 26 2000

**IN THE MATTER OF THE ONTARIO HERITAGE ACT
R.S.O. 1990, CHAPTER 0.18 AND
1643 YONGE STREET
CITY OF TORONTO, PROVINCE OF ONTARIO**

NOTICE OF PASSING OF BY-LAW

[REDACTED]
The Massey Foundation
701 – 190 George Street
Toronto, Ontario
M5R 2N4

[REDACTED] **[REDACTED]**
Commemorative Services of Ontario
65 Overlea Boulevard, Ste. 500
Toronto, Ontario
M4H 1P1

Ontario Heritage Foundation

Take notice that the Council of the City of Toronto has passed By-law No. 179-
2000 to designate 1643 Yonge Street as being of architectural and historical value or
interest. ✓

Dated at Toronto this 24th day of May, 2000.

[Signature]
6 Novina Wong
City Clerk

[Signature]
KT

2/23/01 ✓ RA
~~6/22/00~~
RA ✓

Authority: Toronto Community Council Report No. 2, Clause No. 31,
as adopted by City of Toronto Council on February 1, 2 and 3, 2000
Enacted by Council: April 13, 2000

CITY OF TORONTO

BY-LAW No. 179-2000

To designate the property at 1643 Yonge Street (Massey Mausoleum, Mount Pleasant Cemetery) as being of architectural and historical value or interest.

WHEREAS authority was granted by Council to designate the property at No. 1643 Yonge Street (Massey Mausoleum, Mount Pleasant Cemetery) as being of architectural and historical value or interest; and

WHEREAS the *Ontario Heritage Act* authorizes the Council of a municipality to enact by-laws to designate real property, including all the buildings and structures thereon, to be of historical or architectural value or interest; and

WHEREAS the Council of the City of Toronto has caused to be served upon the owners of the land and premises known as No. 1643 Yonge Street and upon the Ontario Heritage Foundation, Notice of Intention to designate the property and has caused the Notice of Intention to be published in a newspaper having a general circulation in the municipality as required by the *Ontario Heritage Act*; and

WHEREAS the reasons for designation are set out in Schedule "A" to this by-law; and

WHEREAS no notice of objection to the proposed designation was served upon the Clerk of the municipality;

The Council of the City of Toronto HEREBY ENACTS as follows:

1. The property at No. 1643 Yonge Street, more particularly described on Schedule "B" and shown on Schedule "C" attached to this by-law, is designated as being of architectural and historical value or interest.
2. The City Solicitor is authorized to cause a copy of this by-law to be registered against the property described in Schedule "B" to this by-law in the proper Land Registry Office.
3. The City Clerk is authorized to cause a copy of this by-law to be served upon the owners of the property at No. 1643 Yonge Street and upon the Ontario Heritage Foundation and to cause notice of this by-law to be published in a newspaper having general circulation in the City of Toronto as required by the *Ontario Heritage Act*.

ENACTED AND PASSED this 13th day of April, A.D. 2000.

CASE OOTES,
Deputy Mayor

NOVINA WONG,
City Clerk

(Corporate Seal)

SCHEDULE "A"

HERITAGE PROPERTY REPORT

1643 Yonge Street: Massey Mausoleum

This report comprises the "Long Statement of Reasons for Designation" under Part IV of the *Ontario Heritage Act* for the property at 1643 Yonge Street (Massey Mausoleum). It contains Basic Building Data, as well as sections on Historical Development, Architectural Description, Context, Summary and Sources. Location Map and Photographs are included, and the "Short Statement of Reasons for Designation" (intended for publication) is appended.

Basic Building Data:

Address:	1643 Yonge Street (Plot #116, Mount Pleasant Cemetery; cemetery located on east side of Yonge Street, north of St. Clair Avenue West)
Ward:	23 (Midtown)
Current Name:	Massey Mausoleum
Historical Name:	Massey Mausoleum
Construction Date:	1890-1894
Architect:	E. J. Lennox
Contractor/Builder:	Holbrook and Mollington, stone carvers
Additions/Alterations:	1967: crypt filled in; 1987, apse windows repaired; 1999: exterior repaired
Original Owner:	Hart Massey, manufacturer
Original Use:	Funerary (mausoleum)
Current Use*:	Funerary (mausoleum); * this does not refer to permitted use(s) as defined in the Zoning By-law
Heritage Category:	Landmark Heritage Property (Category A)
Recording Date and Recorder:	November 1999/KA

Historical Background:

Mount Pleasant Cemetery:

During the surveying of Yonge Street that began in 1794, 200-acre farm lots were laid out on either side of the road north of Bloor Street. East of Yonge, the lots were laid out parallel to the Third Concession Road (St. Clair Avenue) and extended east to present day Bayview Avenue. A fledgling community developed at the crossroads formed by Yonge Street and St. Clair Avenue. On mid-19th century maps, the area was marked "Deer Park" in recognition of the Heath Farm at the northwest corner of the intersection where deer were purported to wander. With the growth of the City of Toronto and improvements to Yonge Street, most of the land on either side of the thoroughfare was subdivided into building lots. An exception was Lot 19, north of the Yonge and St. Clair corners, which remained undivided under the ownership of the Cawthra family. In 1873, trustees of the Toronto General Burying Ground purchased Lot 19 as the location of Mount Pleasant Cemetery. It remains the only intact 200-acre lot to survive in the former City of Toronto.

The first non-sectarian cemetery in York (Toronto) opened in 1826 on a six-acre site near the northwest corner of Yonge and Bloor Streets. Officially named the York Burying Ground, but better known as Potter's Field Cemetery or the Strangers Burial Ground, the cemetery contained 6000 burials by the mid 19th century. With the continuing growth of the city, and the need for burial grounds removed from the urban core, the non-profit Toronto General Burial Ground Trust (later the Toronto Trust Cemeteries and now Commemorative Services of Ontario) was established to develop new cemeteries. Most of the remains from Potter's Field were reinterred at the Necropolis, a 15-acre cemetery opened by the Trust in 1850. Unidentified remains were moved to Mount Pleasant Cemetery following its opening in 1876.

In 1874, Henry A. Engelhardt designed the new cemetery, originally encompassing the 53 acres closest to Yonge Street. Trained as a civil engineer in his native Germany, Engelhardt became a landscape architect who laid out parks and cemeteries throughout North America, including the initial plans for High Park. The design of the cemetery as a park-like space with walks, drives, fences and natural lakes was inspired by the garden cemetery movement and in particular, Mount Auburn Cemetery in Boston. Trees, shrubs and gardens were meticulously added and, today, Mount Pleasant has one of the most important collections of trees in North America, combining indigenous and non-indigenous species.

The first burial at Mount Pleasant Cemetery occurred in March, 1876, prior to the official opening in November, 1876. Scientist Sir Frederick Banting, Prime Minister William Lyon Mackenzie King and pianist Glenn Gould are among the noteworthy people buried in the cemetery where interments number 168,000. Following the annexation of the Deer Park neighbourhood in 1908, the City of Toronto absorbed Mount Pleasant Cemetery on June 27, 1914.

Massey Mausoleum:

Industrialist and philanthropist Hart Alberin Massey (1823-1896) commissioned the Massey Mausoleum. In 1851, Massey took over the management of his father's foundry and machine shop in Newcastle, Canada West (now Ontario). Following its incorporation as the Massey Manufacturing Company in 1870, the firm relocated to Toronto in 1879, producing agricultural implements on a six-acre site on King Street West near Strachan Avenue. The company grew through a series of mergers, including one with its chief rival, the A. Harris, Son and Company in 1891. Hart Massey served as the president of the renamed Massey-Harris Company (it became Massey-Ferguson in 1958 and was absorbed by the Varsity Corporation in 1987). By the close of the 19th century, Massey-Harris employed hundreds and was the largest producer and exporter of its type in the British Empire.

Hart Massey acquired his plot in Mount Pleasant Cemetery in the early 1880s. Plans for the Massey Mausoleum followed the untimely deaths of his eldest and youngest sons, Charles Albert Massey (1848-1884) and Fred Victor Massey (1866-1890). The mausoleum was completed in 1894, along with two other memorials to his children: the Massey Music Hall and the Fred Victor Mission. In addition to Hart Massey and the sons who predeceased him, eight Massey family members and close associates are interred in the Mausoleum. Hart Massey's only daughter, Lillian Massey Treble (1854-1915) is remembered for funding the University of Toronto's Household Sciences Building. Chester Daniel Massey (1850-1926) was the last surviving son and the administrator of Hart Massey's will. In 1918, Chester Massey oversaw the creation of the Massey Foundation, whose philanthropic endeavours included the funding of Hart House and Massey College at the University of Toronto (the latter sites are included on the *City of Toronto Inventory of Heritage Properties*). Other members of the Massey family are buried in the triangle of land surrounding the Mausoleum, including Hart Massey's third son, Walter Edward Hart Massey (1864-1901), who served as the president of the Massey-Harris Company prior to his death. The Massey Foundation maintains the Massey Mausoleum.

Hart Massey engaged Toronto architect Edward James Lennox (1854-1933) to design the Massey Mausoleum. Following an apprenticeship with architect William Irving, E. J. Lennox formed a short-lived partnership with Frederick McCaw. During this interval, Lennox and McCaw won a competition for their plan for Queen's Park, a project that was never realized but is an indication of the architect's familiarity with park design. Beginning in 1881, Lennox embarked on a solo practice that was one of the largest in Canada by 1885. While he closed his firm in 1917, Lennox's interest in the field remained intent and, in 1931, he received accreditation as a certified architect.

Lennox's association with the Massey family began in 1883 when he was awarded the commission for the Massey Manufacturing Company's head office building at 915 King Street West. At the same time, he devised the plans for a residence for Charles Massey at 519 Jarvis Street. Charles Massey died prior to the completion of the house. It was acquired by his brother, Chester, who raised his two sons there: Raymond Massey, the famed Hollywood actor, and Vincent Massey, Canada's first native-born Governor General. Beginning in 1886, Lennox was occupied with the design and construction of Toronto's Third City Hall (now known as Old City Hall) on Queen Street West. During this critical period in his career, the buildings of American architect Henry Hobbs Richardson, whose interpretations of Romanesque architecture became known across

North America, influenced Lennox. Romanesque arches and decorative detailing marked Lennox's subsequent commissions through the end of the 19th century. His remaining projects for the Massey family, the Fred Victor Mission at Queen and Jarvis Streets (now demolished) and the Massey Mausoleum, bear the hallmarks of the style. The extant buildings are listed on the *Inventory of Heritage Properties*.

Correspondence between the architect and his client indicates that Hart Massey took an active interest in the plans for the mausoleum (Litvak, 38). Lennox consulted Massey on his decision to replace the simple Classical urn planned for the top of the structure with a sculpted figure evoking Christian symbolism. This detailing, combined with the church-like appearance of the structure, reflects Massey's position as one of the leading Methodists in Toronto society.

The Massey Mausoleum is one of 20 family mausoleums (seven of which are partially entombed) located in the west half of Mount Pleasant Cemetery. Classical temples inspired most of the designs. The Massey Mausoleum stands out among them as the largest and the most impressive of the two displaying Romanesque Revival styling.

Architectural Description:

The Massey Mausoleum is designed in the Romanesque Revival style identified by the use of round arches, heavy stone finishes and elaborate detailing drawn from the architecture of the 10th through the 12th centuries. Resting on a limestone foundation, there are ventilation grilles at grade. Combinations of rock faced and smooth blocks of granite are used for the walls, roofs, window detailing and carved decorations of the structure. The compressed basilican form is based on Romanesque church architecture. The plan features a central two-storey nave with a stepped roof. Flanking the nave are short single-storey side aisles (north and south) beneath stepped gable roofs with conical tops. A shallow single-storey porch on the principal (west) façade contains the entrance. On the rear (east) wall, the building has a semi-circular shaped apse protected by a conical stone roof with a dentilled cornice. A rounded false stair tower is asymmetrically positioned on the right (south) side of the entrance.

On the principal façade, four steps lead from the base of the mausoleum to the entrance. A pair of heavy bronze doors contains grilles with intricate patterns, panels with the letter "M", and hardware. The entrance is protected by a stepped roof, flanked by banded columns, and surmounted by a name band marked "MASSEY". The stair tower places a carved panel next to a single opening containing a multi-coloured stained glass window with floral motifs. Above, a round-arched arcade contains textured leaded glass windows in geometric patterns. Each side aisle displays a large round-arched opening with voussoirs. The opening holds a three-part window that is divided by columns beneath a transom with roundels. The upper part of the apse has an arcade of small flat-headed openings, divided by single, pairs and trios of columns and containing five multi-coloured stained glass windows with floral and leaf patterns. A horizontal band course divides the two-storey nave into roughly textured and smoothly finished parts. The corners of the upper wall display rounded buttresses that complement the shape of the columns and stair tower. On all four walls, the clerestorey contains a trio of round-arched openings. The windows hold leaded glass in a pattern of intricate interwoven circles with highly faceted jewels and roundels. Two of the windows include horizontal hinged ventilators for air circulation. A lantern surmounts the roof of the nave. It creates

a base for a nine-foot-high figure symbolizing Hope. The anchor placed in the right hand of the figure can be interpreted as the symbol of the peaceful haven awaiting after the journey of life, or as the "anchor" of the Christian faith that remains unchallenged by death. The important Toronto sculptors, Holbrook and Mollington, carved the figure and the other detailing on the mausoleum.

Their practice included noted Toronto landmarks such as the Bank of Montreal Building (now the Hockey Hall of Fame), the Ontario Legislative Building, and the George Gooderham House (now the York Club), all of which are included on the *Inventory of Heritage Properties*.

The interior rises two stories beneath a vaulted stone ceiling. A coloured mosaic tile floor contains a cast bronze grille. Beneath the grille, circular stairs lead down to the crypt with space for 15 interments. The area under the floor was filled in with concrete in 1967 (this is considered a reversible alteration). On either side of the nave, loculi with marble facings contain eight spaces for interments. The apse is entered through a round-arched portal supported on columns. At the east end, an altar is raised three steps.

Context:

The Massey Mausoleum is located in Plot #116 at Mount Pleasant Cemetery. For the purposes of designation, the boundaries of the property are established by a limit of one metre around the exterior walls of the structure.

The ravine setting at the west end of Mount Pleasant Cemetery incorporates several rises of land. The Massey Mausoleum is elevated on a triangular-shaped parcel surrounded by roadways. With the height of the structure and its raised setting, the mausoleum is visible from many vantage points within the cemetery and dominates the monuments in its vicinity.

The Massey Mausoleum is one of the three family mausoleums included on the *Inventory of Heritage Properties* in 1976. Dating to 1894, the Northrup-Gooderham Tomb and the French Tomb are built into the hillside in Section T near Yonge Street. The Mausoleum, a building containing chapels, a crematorium, and niches and crypts for interments, is located along the south side of the property off Inglewood Avenue. Designed by architects Darling and Pearson and completed in 1920, it is also identified on the *Inventory of Heritage Properties*.

Summary:

The Massey Mausoleum was constructed for the Masseys, one of the most influential families in the industrial development and philanthropic history of Toronto. It was built in 1890-1894 according to the designs of E. J. Lennox, the most prolific Toronto architect at the end of the 19th century. The Massey Mausoleum is the largest and most visible mausoleum located in Mount Pleasant Cemetery, a landscaped garden cemetery noted for its size, design, and collection of trees.

Subject: By-law: Designation of part of premises 1643 Yonge Street
(Massey Mausoleum, Mount Pleasant Cemetery)
under Part IV of the Ontario Heritage Act

SCHEDULE "B"

In the City of Toronto and Province of Ontario, being composed of part of Lot 19 in Concession 3 From the Bay in the Geographic Township of York, the boundaries of the land being described as follows:

PREMISING that the bearings hereinafter mentioned are grid and are referred to the Central Meridian 79 degrees and 30 minutes West Longitude through Zone 10 of the Ontario Co-ordinate System then;

COMMENCING at a point distant 431.48 metres on a course of North 39 degrees 51 minutes and 40 seconds East from the south-westerly angle of the said Lot 19;

THENCE North 62 degrees 39 minutes and 25 seconds East a distance of 6.35 metres;

THENCE North 27 degrees 20 minutes and 35 seconds West a distance of 1.60 metres;

THENCE North 61 degrees 29 minutes and 30 seconds East a distance of 7.60 metres;

THENCE South 28 degrees 30 minutes and 30 seconds East a distance of 0.96 metres to the beginning of a curve to the right having a radius of 3.48 metres;

THENCE north-easterly along the said curve to the right having a radius of 3.48 metres a distance of 8.45 metres to the end of the said curve, distant 6.52 metres on a course of South 28 degrees 30 minutes and 30 seconds East from the beginning of the said curve;

THENCE South 28 degrees 30 minutes and 30 seconds East a distance of 0.96 metres;

THENCE South 61 degrees 29 minutes and 30 seconds West a distance of 7.79 metres;

THENCE North 27 degrees 20 minutes and 35 seconds West a distance of 1.84 metres;

THENCE South 62 degrees 39 minutes and 25 seconds West a distance of 6.35 metres;

THENCE North 27 degrees 08 minutes and 40 seconds West a distance of 4.99 metres, more or less, to the point of commencement.

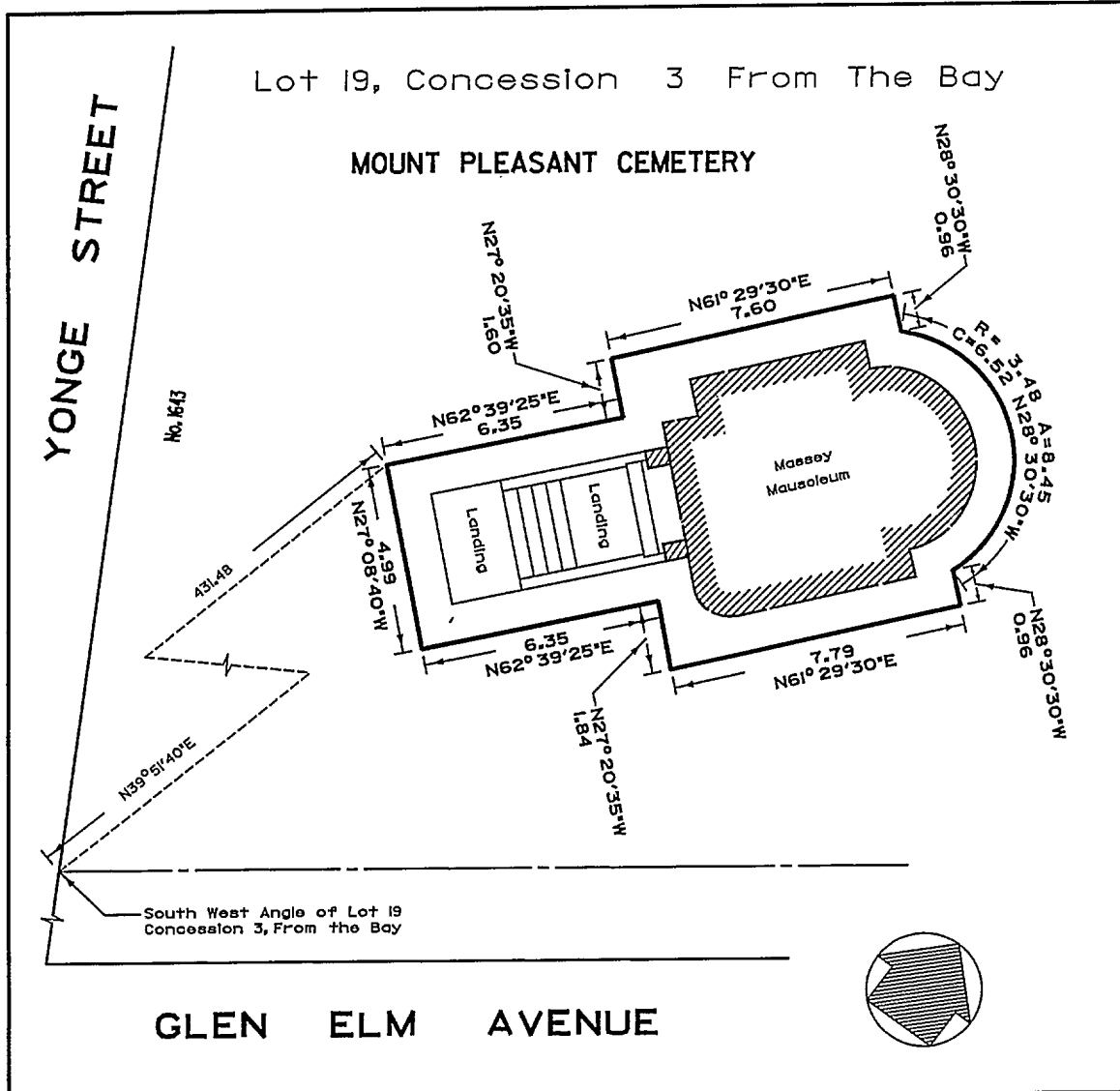
The hereinbefore described land being delineated by heavy outline on Plan SYE2939 dated February 21, 2000, as set out in Schedule "C".

O. L. S.

City Surveyor

Toronto, February 23, 2000

Schedule "C"



Part of Premises 1643 Yonge Street

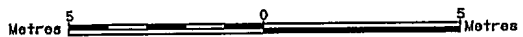
NOTE:
THIS SKETCH IS NOT A PLAN OF SURVEY AND HAS BEEN COMPILED FROM SURVEY NOTES AND OFFICE RECORDS. IT SHALL NOT BE USED EXCEPT FOR THE PURPOSE INDICATED IN THE TITLE BLOCK.

TORONTO

WORKS AND EMERGENCY SERVICES

SKETCH TO ILLUSTRATE
**LAND DESIGNATED AS
BEING OF ARCHITECTURAL AND
HISTORICAL VALUE OR INTEREST**

RATIO 1 : 150



Drawn ME
Checked W.J.M.
Date: Feb. 21, 2000

W. Kowalenko - City Surveyor

FILE
YI-H52

PLAN SYE2939

SYE2939