



An agency of the Government of Ontario



Un organisme du gouvernement de l'Ontario

This document was retrieved from the Ontario Heritage Act e-Register, which is accessible through the website of the Ontario Heritage Trust at **[www.heritagetrust.on.ca](http://www.heritagetrust.on.ca)**.

---

Ce document est tiré du registre électronique, tenu aux fins de la *Loi sur le patrimoine de l'Ontario*, accessible à partir du site Web de la Fiducie du patrimoine ontarien sur **[www.heritagetrust.on.ca](http://www.heritagetrust.on.ca)**.



Ulli S. Watkiss  
City Clerk

**RECEIVED**

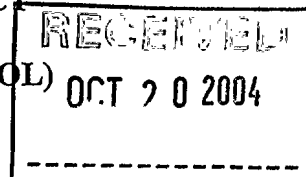
**OCT 27 2004**

CONSERVATION REVIEW  
BOARD

City Clerk's Office  
City Hall, 4th Floor, West Tower  
100 Queen Street West  
Toronto ON M5H 2N2

Tel: 416-392-7033  
Fax: 416-392-1879  
E-mail clerk@toronto.ca  
Web: www.toronto.ca

**IN THE MATTER OF THE ONTARIO HERITAGE ACT  
R.S.O. 1990, CHAPTER 0.18 AND  
385 BRUNSWICK AVENUE (LORETTO ABBEY SCHOOL)  
CITY OF TORONTO, PROVINCE OF ONTARIO**



**NOTICE OF PASSING OF BY-LAW**

Context (Loretto) Inc.  
229 Yonge Street, Suite 500  
Toronto, Ontario  
M5B 1N9

Ontario Heritage Foundatio  
10 Adelaide Street East  
Toronto, Ontario  
M5C 1J3

Take notice that the Council of the City of Toronto has passed By-law No. 751-2004 to designate 385 Brunswick Avenue (Loretto Abbey School) as being of cultural heritage value or interest.

Dated at Toronto this 19<sup>th</sup> day of October, 2004.

Ulli S. Watkiss  
City Clerk

10/29/04  
✓  
RC

Authority: Toronto South Community Council Report No. 5, Clause No. 29,  
as adopted by City of Toronto Council on June 22, 23 and 24, 2004  
Enacted by Council: September 30, 2004

**CITY OF TORONTO**

**BY-LAW No. 751-2004**

**To designate the property at 385 Brunswick Avenue (Loretto Abbey School) as being of cultural heritage value or interest.**

WHEREAS authority was granted by Council to designate the property at 385 Brunswick Avenue (Loretto Abbey School) as being of cultural heritage value or interest; and

WHEREAS the *Ontario Heritage Act* authorizes the Council of a municipality to enact by-laws to designate real property, including all the buildings and structures thereon, to be of cultural heritage value or interest; and

WHEREAS the Council of the City of Toronto has caused to be served upon the owners of the land and premises known as 385 Brunswick Avenue and upon the Ontario Heritage Foundation, Notice of Intention to designate the property and has caused the Notice of Intention to be published in a newspaper having a general circulation in the municipality as required by the *Ontario Heritage Act*; and

WHEREAS the reasons for designation are set out in Schedule "A" to this by-law; and

WHEREAS no notice of objection to the proposed designation was served upon the Clerk of the municipality.

The Council of the City of Toronto HEREBY ENACTS as follows:

1. The property at 385 Brunswick Avenue, more particularly described in Schedule "B" and shown on Schedule "C" attached to this by-law, is designated as being of cultural heritage value or interest.
2. The City Solicitor is authorized to cause a copy of this by-law to be registered against the property described in Schedule "B" to this by-law in the proper Land Registry Office.
3. The City Clerk is authorized to cause a copy of this by-law to be served upon the owners of the property at 385 Brunswick Avenue and upon the Ontario Heritage Foundation and to cause notice of this by-law to be published in a newspaper having general circulation in the City of Toronto as required by the *Ontario Heritage Act*.

ENACTED AND PASSED this 30th day of September, A.D. 2004.

DAVID R. MILLER,  
Mayor

ULLI S. WATKISS  
City Clerk

(Corporate Seal)

**SCHEDULE "A"**  
**REASONS FOR DESIGNATION**

The property at 385 Brunswick Avenue is recommended for designation under Part IV of the *Ontario Heritage Act* for its cultural resource value or interest. Opening as the Loretto Abbey Day School, the building was completed in 1914 for the Sisters of the Institute of the Blessed Virgin (or Loretto Sisters) as an elementary and secondary school for female students with accommodation for the students and the sisters. The institution was renamed Loretto Abbey College School in 1918 and remained in this location throughout the 20th century. Toronto architect Neil Begg designed the structure with features of Edwardian Classicism, applying Beaux-Arts design principles in the scale, the tripartite organization of the west façade, and the application of Classical elements. Loretto Abbey School is located on the east side of Brunswick Avenue, north of Lowther Avenue, where it terminates the vista looking east from Barton Avenue. A prominent feature of the Annex neighbourhood, Loretto Abbey School is architecturally significant as an important example of early 20th-century scholastic design.

The heritage attributes of the Loretto Abbey School consist of the ell-shaped plan (created with the addition of the southeast wing), the exterior walls with openings, and the flat roof. The structure is clad with red brick and trimmed with brick, wood and pre-cast stone. A raised base has artificial stone channeled to resemble fine stone. Above the base, the walls extend three stories, except at the west end where an additional floor is set back above a cornice and topped by a parapet that runs across the west and portions of the north and south ends. The organization of the principal (west) façade into three parts is emphasized with the recession of the five-bay centre block that contains the main entrance. A curved staircase rises to an open porch with Tuscan columns and a triangular pediment that protects a pair of wood doors with a leaded-glass transom. A two-storey bay window is placed above the entrance, while flat-headed window openings with lintels and sills are found in each level. On either side of the centre block, the walls extend three bays. In the second floor, single curved oriel windows are faced with pre-cast stone and flanked by three-storey brick-faced bay windows. The pattern of oriel, flat-headed and bay windows is repeated on the south elevation and wing where a secondary entrance is found. The remaining walls display flat-headed openings. The boiler house and chimney at the east end of the complex and the interior elements are not included in the Reasons for Designation.

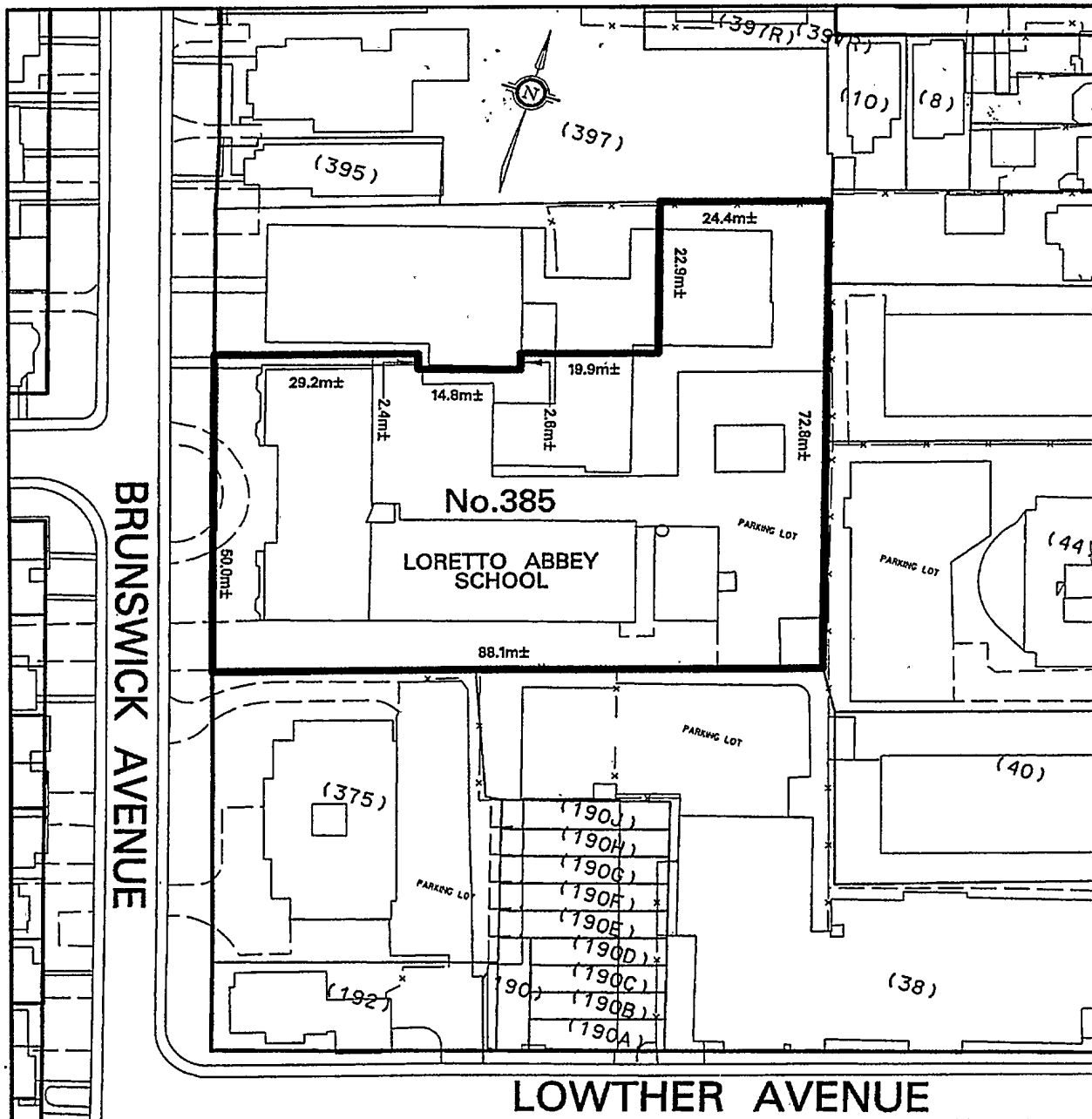
**SCHEDULE "B"**

PIN 21230-0235 (LT).

Part of Lot 25 in Concession 2 Fronting the Bay designated as PART 1 on Plan 66R-19698 in the Land Titles Division of the Toronto Registry Office (No. 66) in the City of Toronto and Province of Ontario.

The hereinbefore described land being delineated by heavy outline on Sketch No. PS-2004-084 dated June 1, 2004, as set out in Schedule "C".

## SCHEDULE "C"

**Toronto**WORKS & EMERGENCY SERVICES  
TECHNICAL SERVICES DIVISION  
SURVEY & MAPPINGNOTE:  
THIS SKETCH IS NOT  
A PLAN OF SURVEY  
AND HAS BEEN COMPILED  
FROM SURVEY NOTES AND  
OFFICE RECORDS, IT SHALL  
NOT BE USED EXCEPT FOR  
THE PURPOSE INDICATED  
IN THE TITLE BLOCK

## PROPERTY INFORMATION SHEET

No. 385 BRUNSWICK AVENUE  
(LORETTO ABBEY SCHOOL)  
LAND DESIGNATED AS BEING OF  
CULTURAL HERITAGE VALUE OR INTEREST

(NOT TO SCALE)

WARD 20 - TRINITY-SPADINA  
DATE: JUNE 1, 2004

SKETCH No. PS-2004-084