



An agency of the Government of Ontario



Un organisme du gouvernement de l'Ontario

This document was retrieved from the Ontario Heritage Act Register, which is accessible through the website of the Ontario Heritage Trust at **www.heritagetrust.on.ca**.

Ce document est tiré du registre aux fins de la *Loi sur le patrimoine de l'Ontario*, accessible à partir du site Web de la Fiducie du patrimoine ontarien sur **www.heritagetrust.on.ca**.

*Sample
Training
July 28/06
② AB*

BY-LAW NO. 2005-286

**A BY-LAW TO DESIGNATE 935 SYDENHAM ROAD (KINGSTON TOWNSHIP HALL) TO BE OF
ARCHITECTURAL AND HISTORICAL VALUE PURSUANT TO THE PROVISIONS OF THE ONTARIO
HERITAGE ACT**

PASSED: November 22, 2005

WHEREAS Section 29 of the Ontario Heritage Act, R.S.O. 1990, Chapter 0.18 authorizes the Council of a Municipality to enact by-laws to designate real property, including all buildings and structures thereon, to be of architectural or historical value or interest;

AND WHEREAS Council has consulted with its Municipal Heritage Committee and has approved the designation of a historical property located at Part Lot 15, Concession 3 (civic address 935 Sydenham Road) on November 22, 2005.

AND WHEREAS notice of the designating by-law was published in the Kingston Whig Standard, which is a newspaper having general circulation in the municipality, on September 27, 2005

AND WHEREAS no notice of objection to the proposed designation was served to the Clerk of the Corporation of the City of Kingston;

THEREFORE, the Council of The Corporation of the City of Kingston hereby enacts as follows:

1. To designate as being of architectural and historical value or interest the following property in the City of Kingston:

(a) 935 Sydenham Road --"Kingston Township Hall"

2. The above mentioned property is more particularly described in Schedule "A" attached hereto.

3. A copy of the designating by-law shall be registered against the property affected in the proper land registry office. The City Clerk is hereby authorized to cause a copy of this by-law to be served on the owner of the land described in Schedule "A" hereto and on The Ontario Heritage Trust, formerly the Ontario Heritage Foundation, and to cause notice of the passing of this by-law to be published in the Kingston Whig Standard.

4. This By-Law shall come into force and take effect on the date of its passing.

Carol Downs

CITY CLERK

Harvey Rosen

MAYOR

Schedule "A"
Description and Reasons for Designation
935 Sydenham Road
"Kingston Township Hall" or "Cataraqui Town Hall" (1847)

Legal Description

Part Lot 15, Concession 3, Former Kingston Township
Civic Address: 935 Sydenham Road
Property Number: 101108019029700

Reasons for Designation/Description:

The 1847 Kingston Township Hall, known alternatively as the "Cataraqui Town Hall", is important for both architectural and historical reasons. It is architecturally important not only because of its individual exterior features, but also as a whole structure and as an important part of the former Cataraqui village streetscape. As the Kingston Township Hall, it has served as an important community focal point and the administrative centre for the Township of Kingston. This single storey neo-classical limestone building contains a number of notable architectural features including, but not limited to: simple but finely crafted stonework details, including a three bay blind arcaded front façade, original window sashes, an original semi-elliptical fanlight above the main entrance and original tripartite window in the rear façade.

Statement of Significance

The former Kingston Township Hall is valued for a variety of reasons. It is valued architecturally as an example of an early limestone municipal building constructed in the neoclassical style. This finely crafted building built out of Kingston limestone is enhanced by such details as a three bay arcaded façade, each containing an opening, its original window sashes and a semi-elliptical fanlight above the main entrance. This value was previously recognized when the Township of Kingston, on August 5, 1980, recommended designating the building; however, the process was not completed. This structure also has cultural, social and historical value as the former administrative centre for the Township of Kingston and focal point for the former Village of Cataraqui. The structure has been used for community meetings and social functions since its construction in 1847. This role is continued today through the continued occupation of the building by Kingston Chapter of the Lions Club which leased the building in 1972.

Character Defining Features/Heritage Attributes

- A community focal point and an important part of the streetscape of the former Village of Cataraqui.
- Notable architectural features include:
 - The application of a neo-classical design to a smaller scale municipal building.
 - Simple but finely crafted stonework architectural details including a three bay blind arcaded front façade with each bay having voussoired heads.
 - An elegant semi-elliptical fanlight above the main entrance.

- A date stone in the gable of the front façade inscribed "TOWNSHIP / Hall / A.D. / 1847".
 - Original window frames and sashes
 - An original tripartite window in the rear façade
 - Typical double wythe limestone wall construction.
- Specific architectural features:
 - *Front (east) Façade*
 - The symmetrical single storey gable front facade is a three bay blind arcade with each bay containing an opening. Construction is of regularly coursed, carefully squared and faced limestone rubble.
 - The central bay is wider than the two flanking bays, has a flat voussoired head and contains the main entranceway.
 - The two flanking panels have slightly arched voussoired heads, each containing a window.
 - The entrance has an elliptical head with radiating voussoirs. An elegant semi-elliptical fanlight over the doorway has its original wood muntins and glass but is now painted over in the Lions colours of yellow and purple. The present door and sidelights are replacements for the original pair of blind six panel doors without sidelights.
 - The entrance is reached by a flight of five wide concrete steps and landing that compensate for the southeasterly sloping site.
 - The flanking windows have voussoirs that follow the camber of the voussoired arch in the wall above and have hammer dressed limestone sills. The frames and sash are original except that a twenty-over-twenty muntin configuration, each sash five lights wide by four high, has been replaced with the present four-over-four pattern.
 - The top portion of the gable is of newer and slightly projecting frame construction, suggesting the presence of a now vanished architectural feature.
 - *Rear (west) Façade*
 - The rear facade is three bays wide, and is constructed of random coursed limestone rubble with large smoothly dressed quoins at the corners
 - Centered in the central bay is an elegant tripartite window with a course of narrow voussoirs over the slightly arched opening and a tooled limestone sill.
 - The centre four-over-four sash have had their original twenty-over-twenty muntins replaced, however the flanking single light wide, four-over-four sash are original.
 - Near the corners of the rear façade are matching door openings with slightly arched voussoirs. The northerly opening is now filled in with limestone rubble and the southerly with a door.

○ *North Side*

- The north side, three bays in length, is built of limestone rubble with the bold west corner quoining and more finished stone of the east corner tied into the wall.
- Originally there were three identical equally spaced window openings with slightly arched heads, voussoirs and tooled limestone sills. The western window opening, however, has been to made into a doorway.
- The doorway retains a remnant of the original window head and jambs that now contain a large two light transom with vertical muntin. Below the transom is a simple plywood door with wide jambs.
- The window frames and sash are original except that the original twenty-over-twenty muntins have been replaced with the present four-over-four configuration.

○ *South Side*

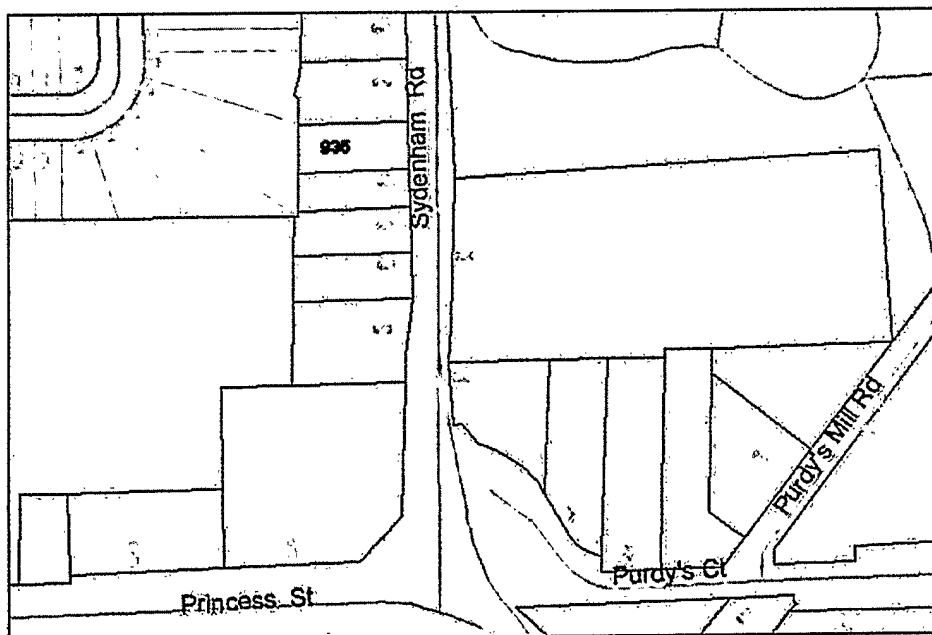
- The south wall, like the north, is built of limestone rubble and is similarly detailed at the corners.
- The symmetrical placement of three windows with their voussoirs and sills is identical to the original North side.
- The four-over-four single hung sash, like the all the others, are an alteration from the original twenty-over-twenty glazing.

○ *Fenestration*

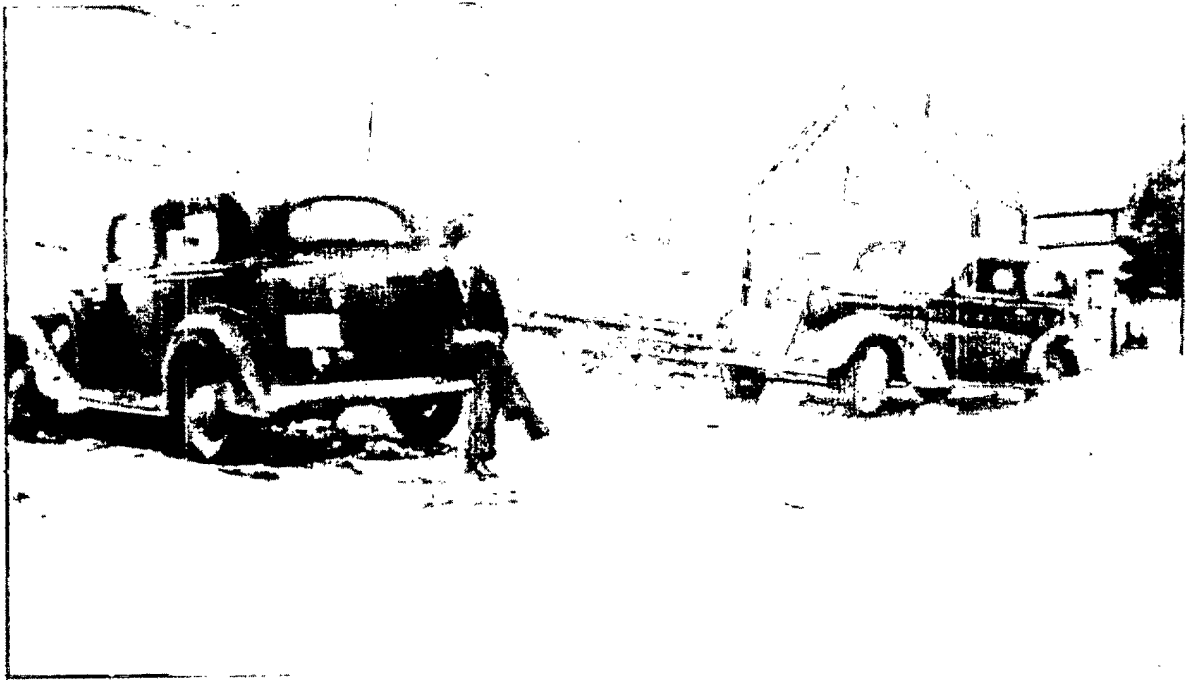
- The window frames and single hung sash throughout are all original except that the twenty-over-twenty muntins which were replaced, probably in the early 1900s, by the present four-over-four pattern. This original configuration is represented on the rear façade by the two narrow flanking four-over-four sash of the tripartite window. Any window replacement/repair should seek to restore the original glazing pattern of twenty-over-twenty.

○ *Roof*

- The gable roof is low pitched and broad with a single parged chimney near the peak at the rear of the North slope. Repairs and modifications have replaced the original cornice returns with boxed in versions. Below the soffit there is no frieze.



Kingston Township Office - 2005.



Kingston Township Office - 1941